



AM3 Anchor Applicator

INNOVATIVE DESIGNS FROM RACINE RAILROAD PRODUCTS



RRP Design

The AM3 Anchor Applicator is an HVAC cab-equipped anchor applicator designed to apply rail anchors with one operator on one rail.

The AM3 Anchor Applicator offers excellent operator visibility of the work zone.

The operator can see upcoming ties that need work, decreasing the chance of missing ties, thus increasing productivity and reducing wear on the machine travel components.

Easy Set-up and Operation

- Easy touchscreen controls for workhead adjustments are made inside the cab from the operator seat, saving time while keeping the operator in a safe environment.
- Manual operation mode
- In-cab adjustments align the workhead to accommodate rail height.
- Independent workarms allows the operator to apply a single anchor left or right of the tie when a single anchor is missing.
- Reliable workhead design provides years of trouble-free service.

Innovative Technology

- Programmable MD4 controlled automation has faster & smoother cycle times than previous RRP machines.
- Onboard electrical system diagnostics that simplify troubleshooting and lessen downtime.
- Remote program updates and remote troubleshooting with built-in telematics available.
- Compatible with Unit 5, Unit Spring, Improved Fair, and Viper Anchors.

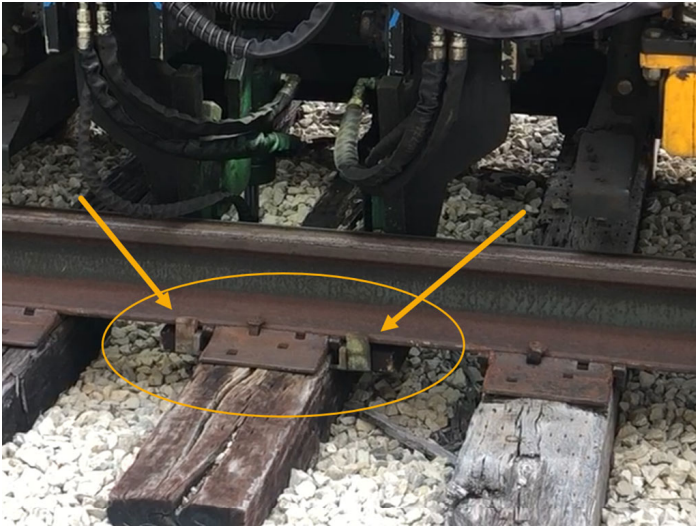


Video of the AM3 Anchor Applicator: <https://tinyurl.com/3hbdbcsp>



AM3 Anchor Applicator

INNOVATIVE DESIGNS FROM RACINE RAILROAD PRODUCTS

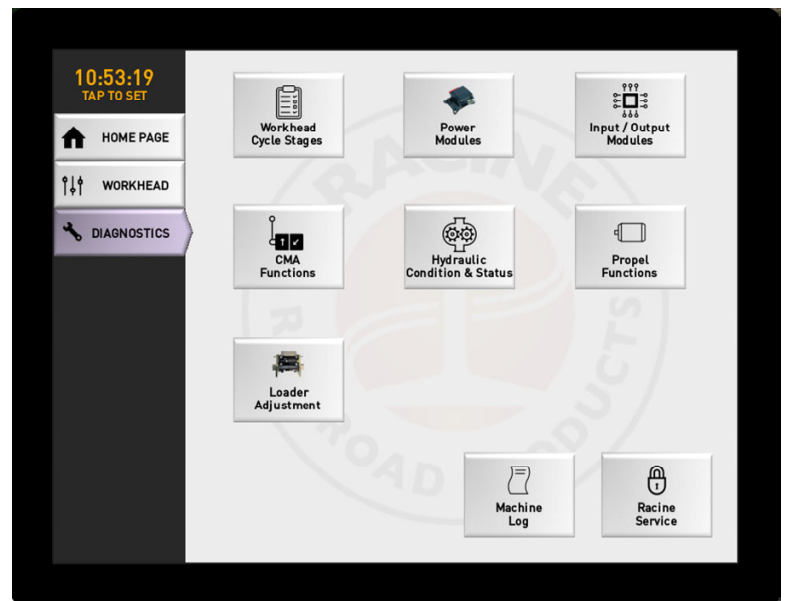


Features

- Tooling available for most modern anchor types: Unit 5, Unit Spring, Improved Fair, and Viper Anchors.
- Cab: Enclosed Heat & A/C, full ergonomic seat, tinted safety glass for operator comfort.
- Center H-Frame turntable that sets on the rails to manually rotate the machine as needed.
- Easy accessibility to workhead components to perform routine maintenance.

Specifications

- Dimensions: 22' L x 8' W x 9' H
- Weight: 16,000 lbs
- Travel Speed: 24 MPH
- Ties per Minute: 10 minimum & adjustable (will depend on track conditions and operator experience)
- Engine: 74 HP Cummins 2.8L Tier IV, liquid cooled engine requiring no DEF
- Fuel Capacity: 54 Gallons
- Hydraulic Reservoir: 34 Gallons
- 24 volt system with circuit breakers for lights & accessories
- Seating Capacity: 1 operator



AM3 Anchor Applicator Diagnostics Screen

For a complete list of specifications and machine options available, contact Racine Railroad Products, Inc. at:
Tel (262) 637-9681 / email: custserv@racinerailroad.com
1955 Norwood Court Mount Pleasant, Wisconsin 53403

